

Nanoscale Architectures for Detection of Environmental Contaminants Using Surface Enhanced Raman Spectroscopy



Vivian Chu



Undergraduate Research Symposium

April 9th, 2024

SFU

CHEMISTRY

4D LABS

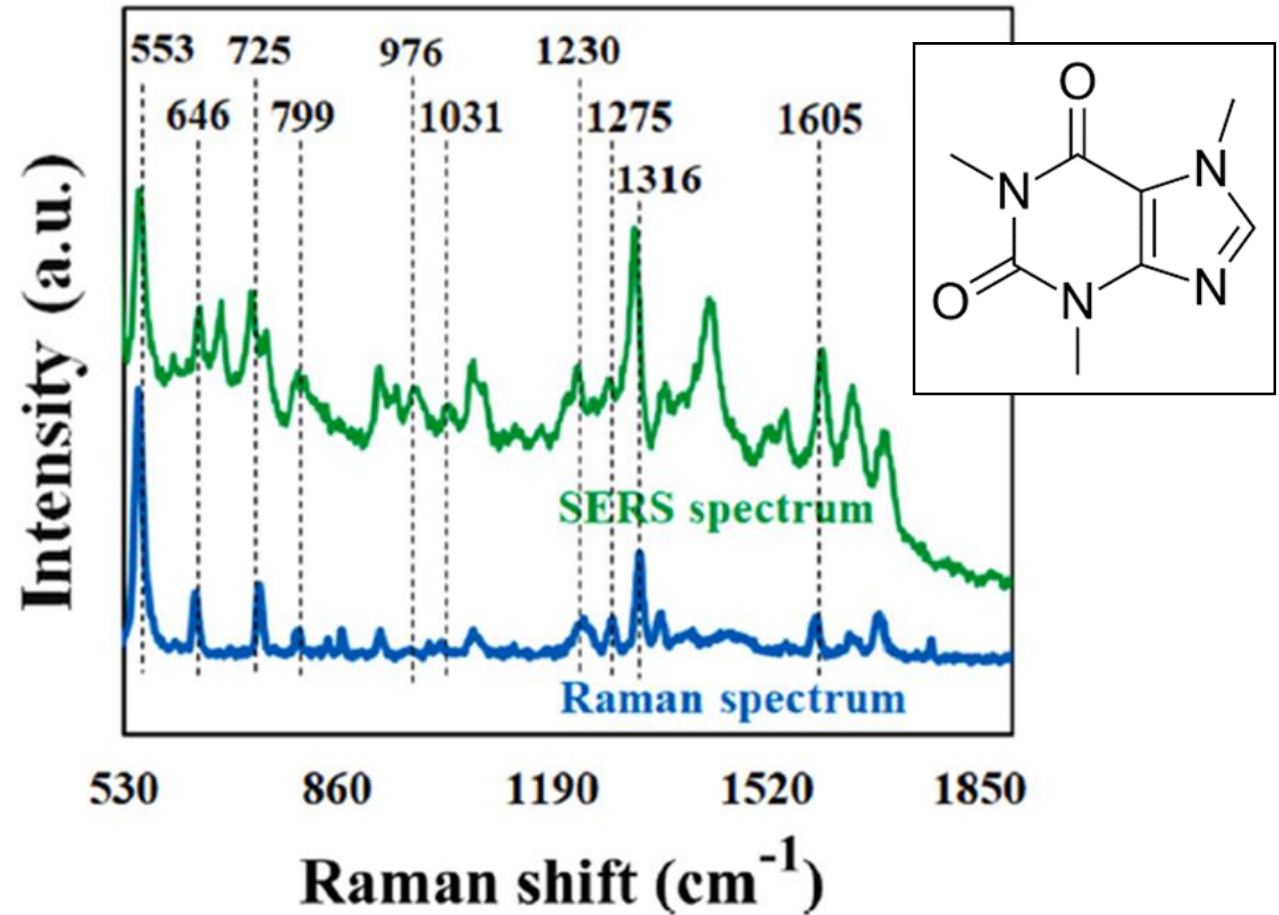
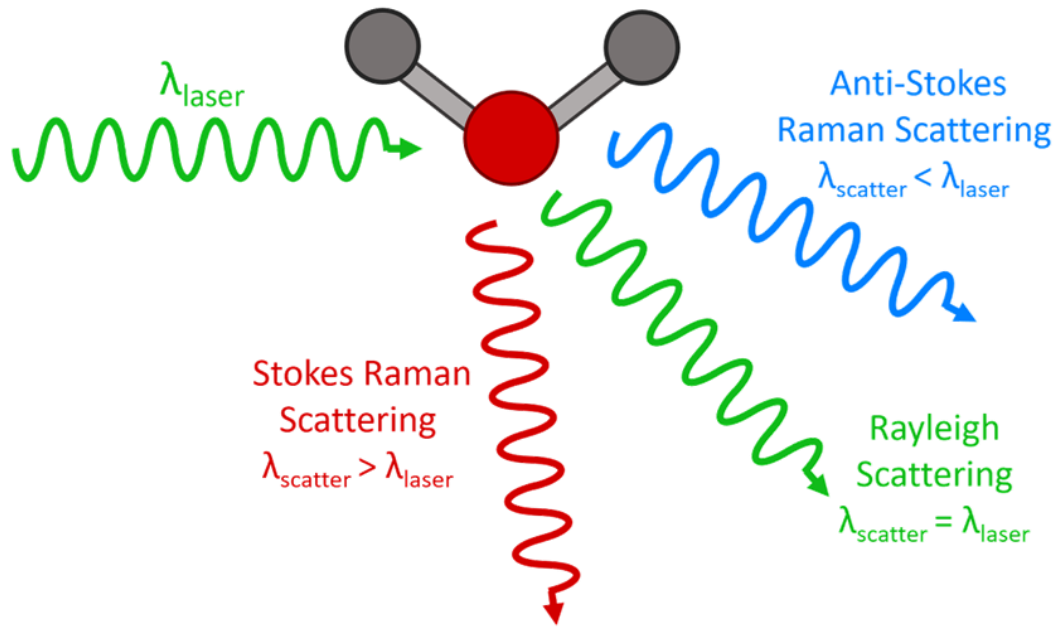


Fig. Raman and SERS spectra obtained using 785 nm laser, exposure time was 30 seconds.

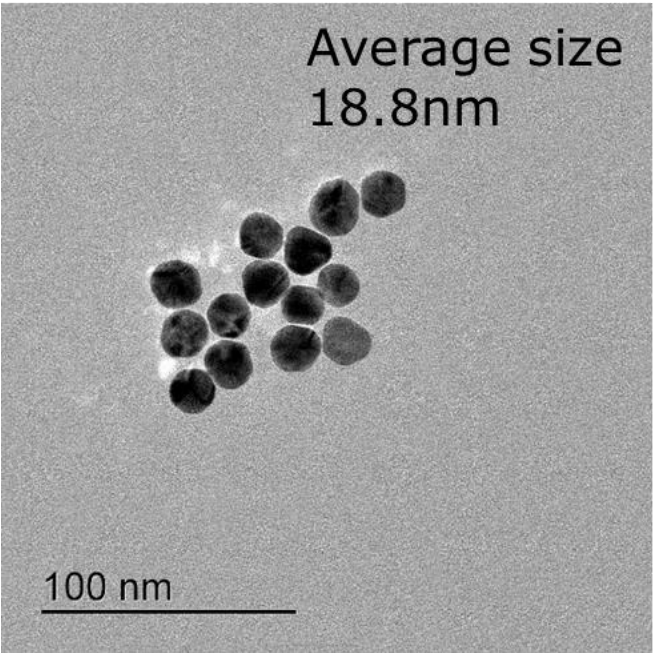
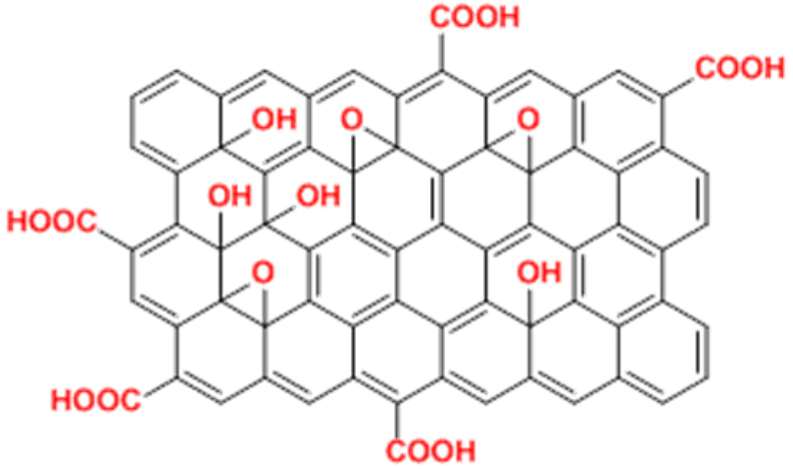
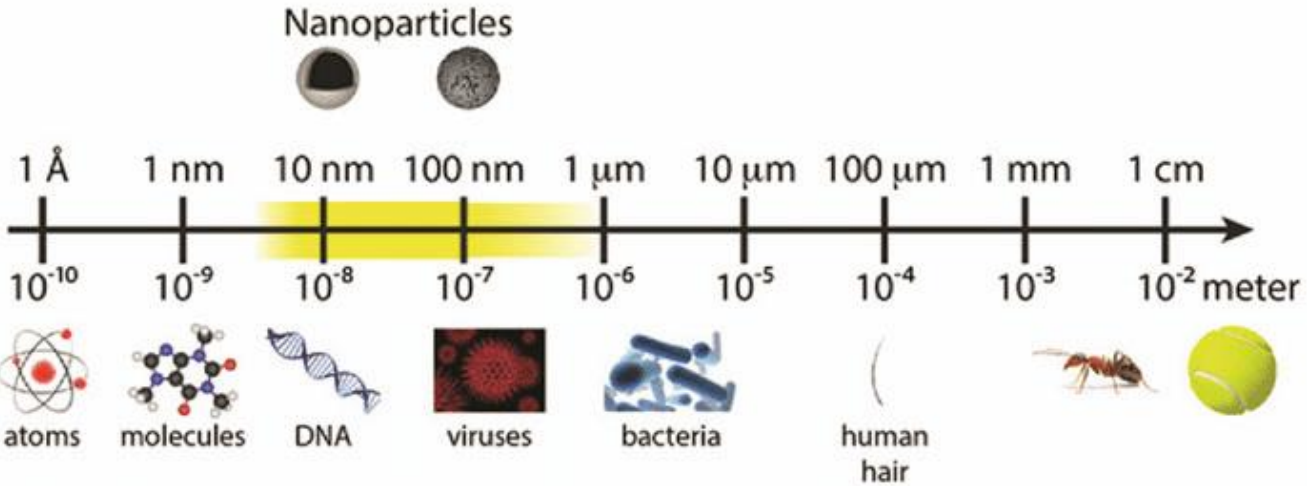


Fig. Transmission Electron Microscope (TEM) image of AuNPs synthesized, taken by Annabelle Hadley

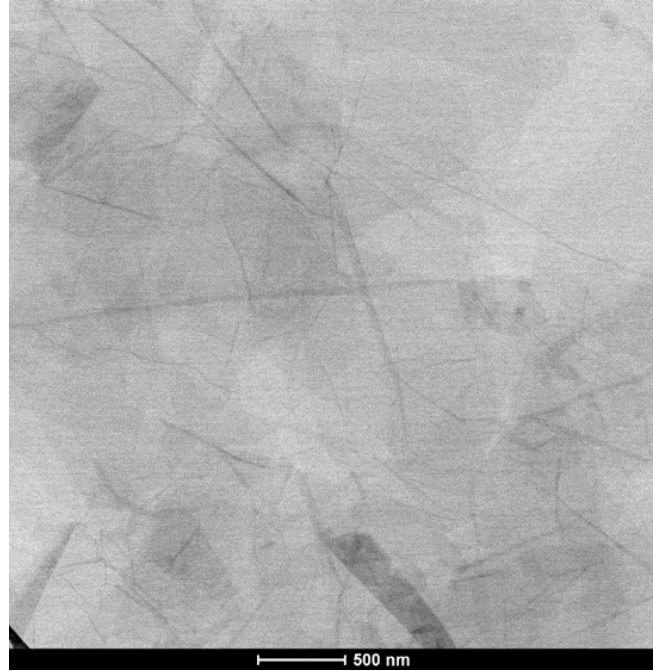
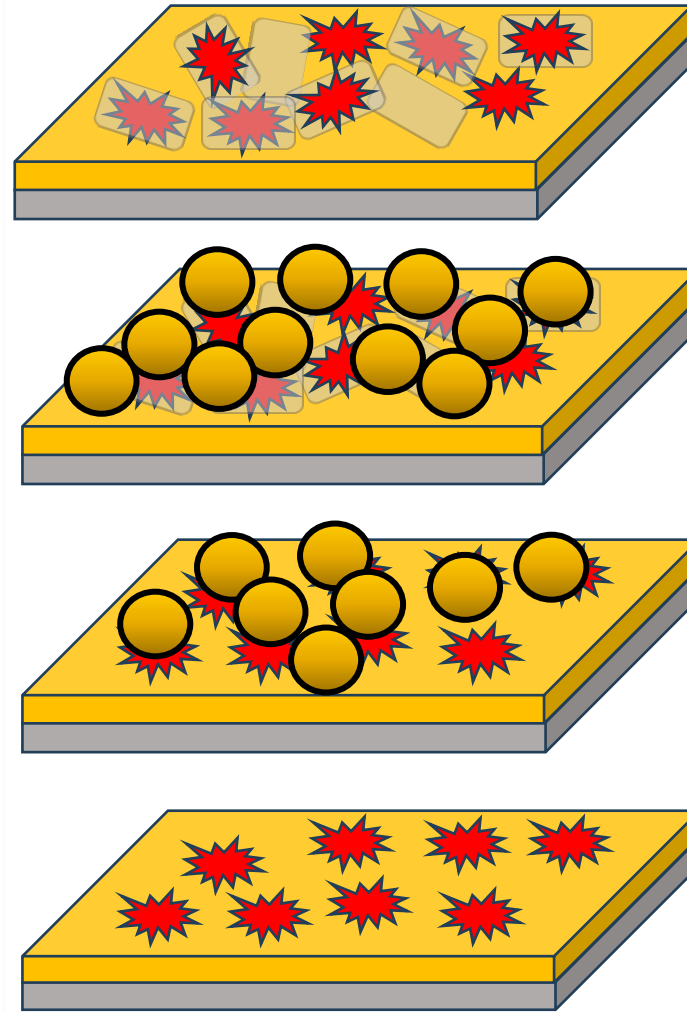
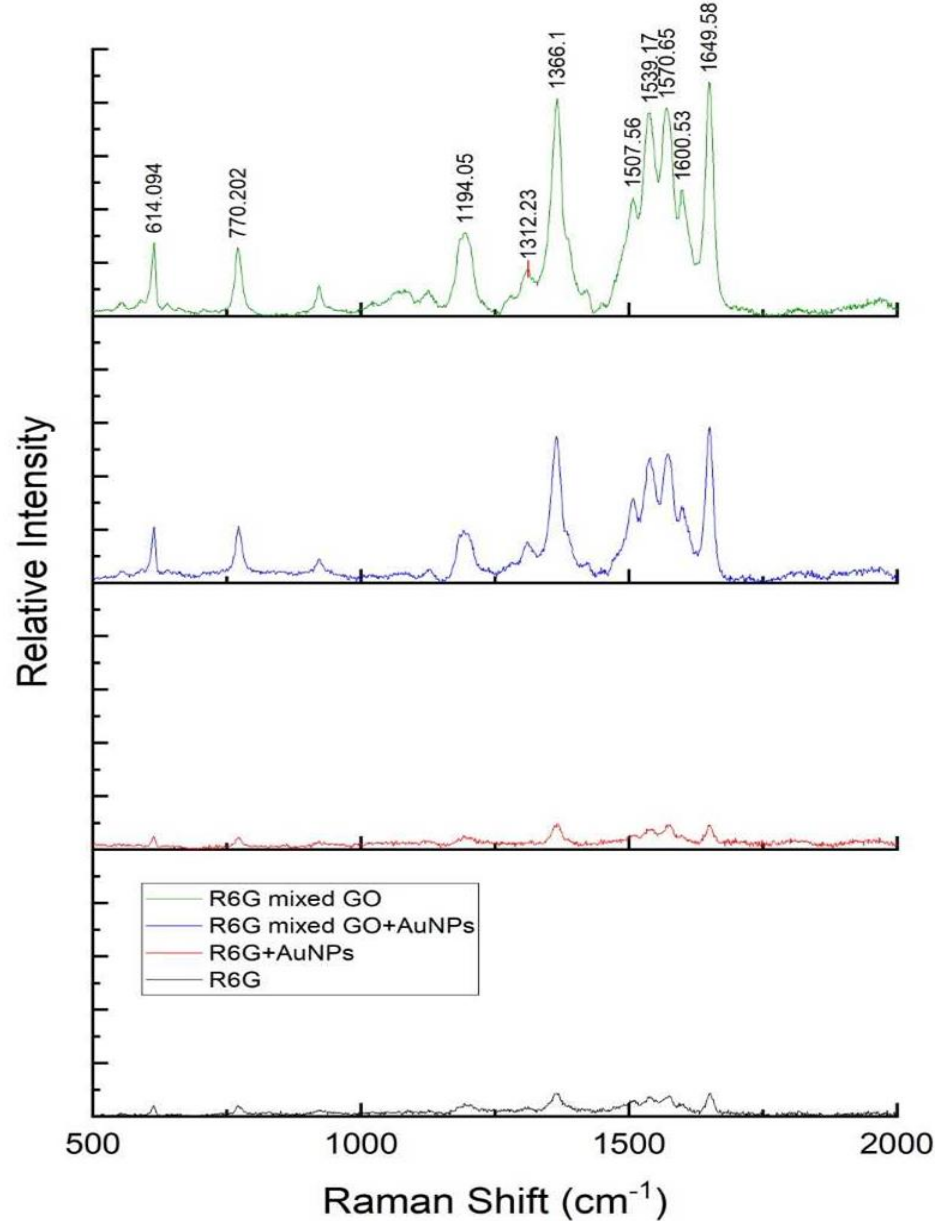

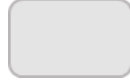
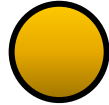


Fig. Transmission Electron Microscope (TEM) image of GO, taken by Annabelle Hadley

(1) Ranjit et al. Nano Med Microbio. 2021, 51-86



-  = Analyte
-  = Graphene oxide
-  = AuNPs

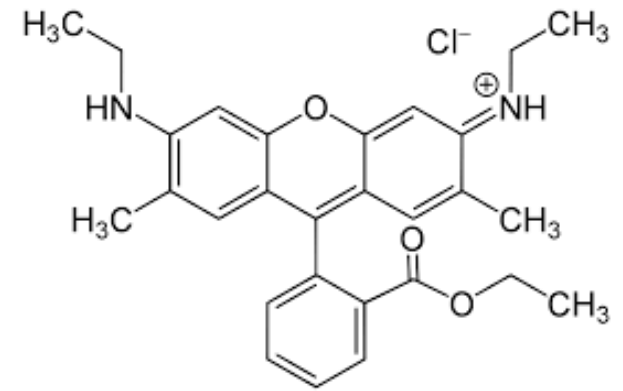


Fig. Molecular structure of Rhodamine 6G

Thanks also to my collaborators...

- Dr. Gates
- Annabelle Hadley
- Tony Ngo

And support for this work from...

